

Maplestead Road, Brixton, SW2

3 bedroom flat - conversion for sale

£650,000

Leasehold

Property Details

Recently refreshed, this spacious three double bedroom, two bathroom split-level flat occupies the upper floors of one of the handsome Victorian terraces on Maplestead Road, a popular neighbourly street next to the green spaces of Holmewood Gardens. An expansive open-plan reception room offers space to cook, dine and unwind, tastefully finished with modern parquet flooring. The kitchen is well-equipped with integrated mod-cons, generous worktop space and feature lighting. A considerate layout ensures all three double bedrooms are nestled away from the street, conveniently situated next to a bathroom whilst also being separated from one another, perfect for sharers. Occupying the first and second floor, both bedrooms to the rear of the property are particularly large. Two stylish bathrooms complete this flat, one with a step-in shower and doubling as a laundry room, the other with a statement bathtub and rain head shower, provides access into the loft. Currently used for storage the new owner could potentially extend into this space, subject to the necessary permissions.

Features

- Three double bedrooms
- Two bathrooms
- Victorian conversion
- Almost 950 square feet of internal space
- Bright and airy throughout
- Split over two floors
- Potential to extend STPP
- Moments to a local park
- Amenities and transport links of Brixton, Streatham and Herne Hill
- Chain-free

Council tax band D

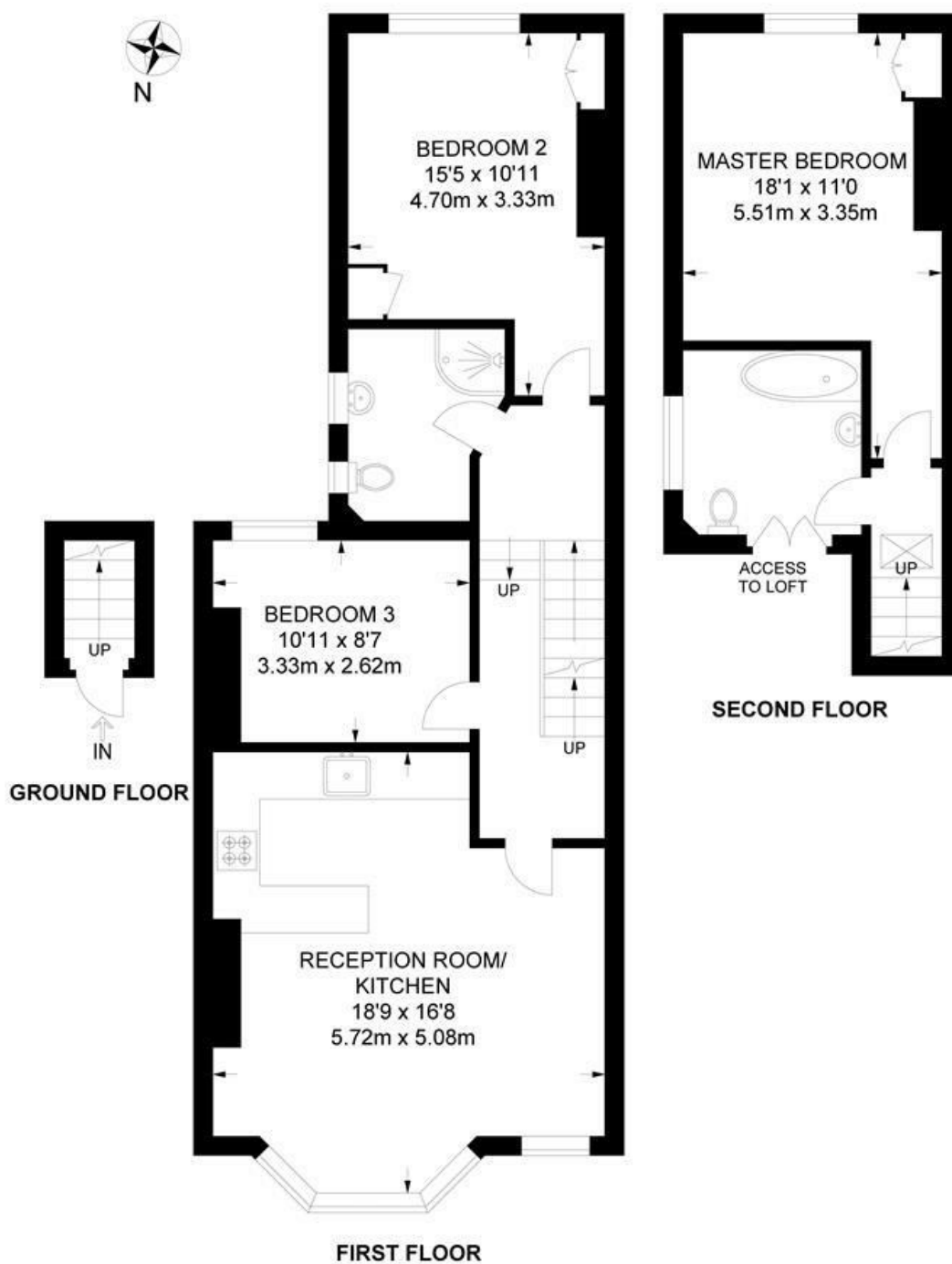
EPC rating E (53)



Maplestead Road, Brixton, SW2

Maplestead Road, SW2
3 Bedroom Flat

APPROXIMATE TOTAL INTERNAL AREA: **940 SQ FT / 87.3 SQ M**



While we try our very best, floor plans are produced as a guide only and we take no responsibility for the precise accuracy with which any property is represented.

Maplestead Road, Brixton, SW2

